

SOAR WITH EAGLES



zippo

HARLEY -



Birth of a Legend

Six individual lighters, each unique in design, combine to form a single powerful image... a true example of the whole being greater than the sum of its parts. Created for Zippo by the master engravers of Barrett-Smythe, Ltd., this puzzle is destined to become a collectors item for both Harley-Davidson® fans and Zippo lighter connoisseurs.



The Product shown in this catalog is officially licensed, and may not be shown in any way without the written consent of Zippo Manufacturing Company. Any unauthorized changes or alterations may be liable to legal action.

scan by zippowelt.de

DAVIDSON



HDPP-6
6 Piece Puzzle/Brass

Since its inception in 1987, Barrett-Smythe has won global acclaim for superb design and faultless execution in creating fine collectibles.

HDPP-6
6 Piece Puzzle/Pewter

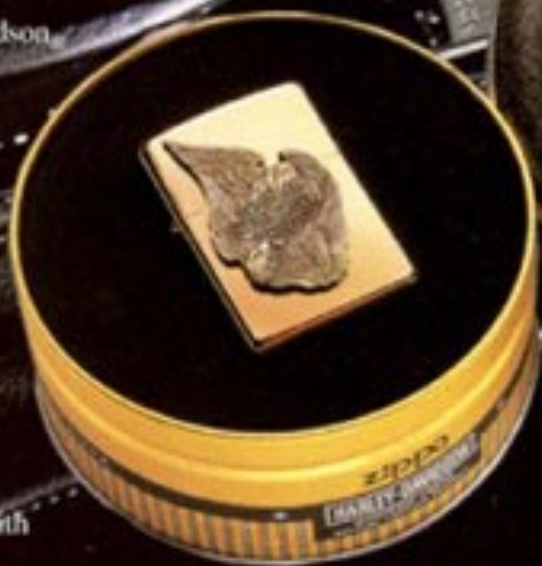




Limited Edition

Harley-Davidson® is more than just a motorcycle.
It is more than just a collection of people
who like motorcycles. Harley-Davidson®
is a way of life, an attitude, an
American icon, whose history
spans more than nine decades.

Zippo presents Fighting Eagles,
our 1996 Harley-Davidson®
Collectible of the Year. Packaged
in a commemorative tin, Fighting
Eagles is available in solid brass with
an antiqued brass emblem, and
high polish chrome with a pewter emblem.



No. 254BBSHD H178
Brass
Fighting Eagles With Tin



No. 250BSHD H177
High Polish Chrome
Fighting Eagles



No. 254BBSHD H166
Brass
Eagles Profile



No. 250BSHD H165
High Polish Chrome
Eagles Profile



Call Of The Wild



No. 250BSHD H175
Chrome/Pewter Emblem
Eagle on Tire



No. 250BSHD H167
Chrome/Pewter Emblem
Eagle on Perch



No. 254BBSHD H176
Brass/Brass Emblem
Eagle on Tire



No. 254BBSHD H168
Brass/Brass Emblem
Eagle on Perch



No. 250BSHD H169
Chrome/Pewter Emblem
Wolf on Mountain



No. 250BSHD H171
Chrome/Pewter Emblem
Bear



No. 254BBSHD H170
Brass/Brass Emblem
Wolf on Mountain



No. 254BBSHD H172
Brass/Brass Emblem
Bear

Like a powerful Harley-Davidson[®] machine,
these wild creatures are ready to spring into
action.

Available in brass and pewter finish,
the full-faced emblem symbolizes the
magnificent power of Harley-Davidson.

Leather and



No. 25005HD H35
High Polish/Pewter Emblem
Macho Man



No. 254005HD H36
Solid Brass/Brass Emblem
Macho Man



No. 25005HD H37
High Polish/Pewter Emblem
Viking



No. 254005HD H38
Solid Brass/Brass Emblem
Viking



No. 25005HD H39
High Polish/Pewter Emblem
Devil



No. 254005HD H40
Solid Brass/Brass Emblem
Devil





More Leather & Lace



No. 250BSHD H148
High Polish Chrome
Girl with Earrings



No. 250BSHD H149
High Polish Chrome
Girl with Turban



No. 250BSHD H150
High Polish Chrome
V-Engine



No. 250BSHD H151
High Polish Chrome
Macho Man



No. 250BSHD H152
High Polish Chrome
Tire With Logo



No. 250BSHD H32
High Polish Chrome
Tire With Logo



No. 250BSHD H33
High Polish Chrome
Viking

Lace Collection



No. 250BSHD H41
High Polish/Pewter Emblem
Girl with Earrings



No. 250BSHD H45
High Polish/Pewter Emblem
Tire With Logo



No. 254BBSHD H42
Solid Brass/Brass Emblem
Girl with Earrings



No. 254BBSHD H46
Solid Brass/Brass Emblem
Tire Logo



No. 254BBSHD H147
Solid Brass/Brass Emblem
Eagle Stars & Stripes



No. 250BSHD H43
High Polish/Pewter Emblem
Girl with Tattoo



No. 250BSHD H89
High Polish/Pewter Emblem
V-Engine



No. 250BSHD H146
High Polish/Pewter Emblem
Eagle Stars & Stripes



No. 254BBSHD H44
Solid Brass/Brass Emblem
Girl with Tattoo



No. 254BBSHD H90
Solid Brass/Brass Emblem
V-Engine

Roadmaster



No. 250HD H1
High Polish Chrome
Follow the Eagle



No. 250HD H2
High Polish Chrome
Leader of the Pack



No. 250HD H3
High Polish Chrome
Live to Ride



No. 250HD H4
High Polish Chrome
Built to Last



No. 250HD H5
High Polish Chrome
Symbol of American Freedom



No. 250HD H6
High Polish Chrome
Made in USA Eagle



No. 250HD H7
High Polish Chrome
Righteous Ruler



No. 250HD H8
High Polish Chrome
Eagle/Flag



Series



No. 250HD H9
High Polish Chrome
Survivorz



No. 250HD H10
High Polish Chrome
Sink Your Claws



No. 250HD H11
High Polish Chrome
Emblem w/Feathers



No. 250HD H71
High Polish Chrome
Made in Milwaukee



No. 250HD H56
High Polish Chrome
Eagle with Talons

The inimitable spirit of freedom and adventure that characterizes Harley-Davidson[®] is captured in vivid colors on Zippo high polish chrome lighters.



Side Mount Collection



No. 2911HD H140
Antique Brass
Side Mount Eagle Emblem



No. 1211HD H141
Antique Silver
Side Mount Eagle Emblem



No. 201BSHD H174
Antique Brass
Side Mount Logo & Wings



No. 121BSHD H173
Antique Silver
Side Mount Logo & Wings



Crank It Up

Velour Gift Package
(Standard w/Gold Electroplate)



No. 250GHD H144
Gold Electroplate
Gas Tank



No. 250GHD H143
Gold Electroplate
Eagle



No. 250GHD H145
Gold Electroplate
V-Engine



No. 250GHD H146
Gold Electroplate
Saddle Bags



More Roadmaster



No. 250HD 1003
High Polish Chrome
Chain The Power



No. 250HD 1119
High Polish Chrome
Symbol of American Freedom



No. 250HD 1120
High Polish Chrome
Fat Bike



No. 250HD 1121
High Polish Chrome
American Classic



No. 250HD 1118
High Polish Chrome
Soaring Eagle



No. 250HD 1115
High Polish Chrome
Built To Last



No. 250HD 1149
High Polish Chrome
Flying Eagle



No. 250HD 1153
High Polish Chrome
I Own a Harley



No. 250HD 660
High Polish Chrome
Eagle 1903



No. 250HD 1062
High Polish Chrome
Soaring Eagle

Savage Slims



No. 1610HD 624
High Polish Chrome
Harley-Davidson Vertical



No. 1654HD 627
Solid Brass
Harley-Davidson Eagle



No. 7500MCHD 11135
Stainless/Pewter Emblem
Money Clip Knife Scissors
Eagle Stars & Stripes



No. 5990BHD 11137
Brass Key Holder
Viking

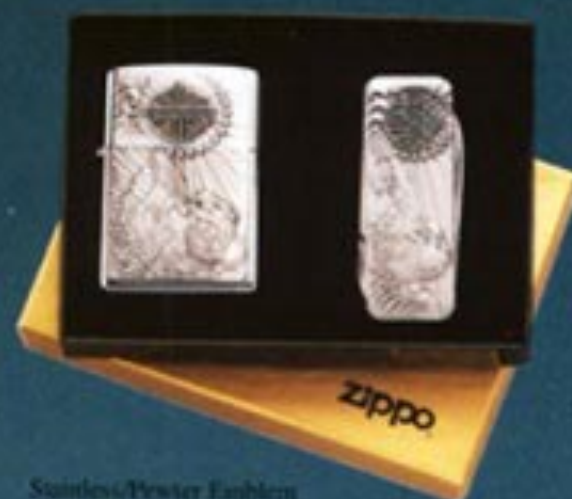


No. 5990HD 11138
Pewter Key Holder
Viking

Legends



Pack It In



Stainless/Pewter Emblem
Lighter and Knife Scissors Gift Set
Eagle Stars & Stripes
(Also available in Brass)



No. WGB
Walnut Gift Box
(Optional)



No. 7500HD H136
Stainless/Brass Emblem
Knife Scissors
Eagle Stars & Stripes

No. 7500MCHD H136
(not shown)
Stainless/Brass Emblem
Money Clip Knife Scissors
Eagle Stars & Stripes



Stainless/Brass Emblem
Lighter and Keyholder Gift Set
Viking
(Also available in Pewter)



EHDT
Harley-Davidson Individual Tin
(Standard packaging for all regular
Harley-Davidson lighters)

Black Beauties



No. 218HD 620
Black Matte
American Made



No. 218HD 621
Black Matte
Harley-Davidson Logo



No. 218HD 1158
Black Matte
Eagle with Rose



No. 218HD 1170
Black Matte
Bike



No. 218HD 1174
Black Matte
Cat Eyes



No. 218HD 1184
Black Matte
Scorpion

A Tough Case



HDP1



HDP5



HDP2



HDP3



HDP4

The road is rough and hard, but a Zippo lighter rides easy in this rugged leather pouch. Choose from five classic Harley-Davidson designs stamped on the flap. Looped pouch may be ordered in a gift set with any Zippo Harley-Davidson lighter.

Gone Wild 1 Series



No. 250HD H92
High Polish Chrome
FLHS Electra Glide™



No. 250HD H93
High Polish Chrome
FLSTC Heritage™ Softail™



No. 250HD H94
High Polish Chrome
FXRS Low Rider™ Sport



No. 250HD H95
High Polish Chrome
FLSTF Fat Boy™



No. 250HD H96
High Polish Chrome
FXDB Daytona



No. 250HD H97
High Polish Chrome
XLH Sportster™ 1200



Magnificent symbols of strength and raw power, these mighty Harley-Davidson® machines dominate the world's paths and highways. Zipper depicts these celebrated spirits of the road in luster etch and epoxy chrome on high polish chrome lighters.

Gone Wild II Series



No. 250HD H98
High Polish Chrome
FLHS Electra Glide™



No. 250HD H102
High Polish Chrome
FXDB Daytona



No. 250HD H99
High Polish Chrome
FLSTC Heritage™ Softail™



No. 250HD H100
High Polish Chrome
FXRS Low Rider™
Sport



No. 250HD H101
High Polish Chrome
FLSTF Fat Boy™



No. 250HD H103
High Polish Chrome
XLH Sportster™ 1200



Glide through



No. 250HD H104
High Polish Chrome
1900



No. 250HD H105
High Polish Chrome
1910 Sport Model



No. 250HD H106
High Polish Chrome
1920 Stream-Line



No. 250HD H107
High Polish Chrome
1930 EL



No. 250HD H108
High Polish Chrome
1940 74 OHV



No. 250HD H109
High Polish Chrome
1950 Duo Glider



No. 250HD H110
High Polish Chrome
1960 Electra Glider



No. 250HD H111
High Polish Chrome
1970 FLH Liberty



No. 250HD H112
High Polish Chrome
1980 FXST Softail



No. 250HD H113
High Polish Chrome
1990 Dyna Glider

the Decades



No. EHDT-10

Throughout Harley-Davidson® history, each of these 1900-1990 models marked a significant development. Newer designs and technological advances in the motorcycles have been captured in these fine Zippo lighters.

Ten-piece Zippo collector's tin is available to display this collection.

HARLEY-DAVIDSON

THE WORLD FAMOUS
zippo
GUARANTEE

*Any Zippo product, when returned to our factory,
will be put in first-class mechanical condition free of
charge, for we have yet to charge a cent for the repair of a
Zippo product, regardless of age or condition.
The finish, however, is not guaranteed.*

ZIPPO MANUFACTURING COMPANY, BRADFORD, PA.

zippo

ZIPPO MANUFACTURING COMPANY • BRADFORD, PENNSYLVANIA 16701 • NIAGARA FALLS, ONTARIO L2E 6V9

C-BED 1/96

Produced in USA • Printed in Europe